

CALCULATED
L70
LIFETIME
50,000 HRS

3000 LUMENS	4000 LUMENS	5000 LUMENS	6000 LUMENS	7000 LUMENS	8000 LUMENS	10000 LUMENS
24 WATT	27 WATT	37 WATT	47 WATT	57 WATT	67 WATT	76 WATT
According to DLC Test Results	According to DLC Test Results	According to DLC Test Results	According to DLC Test Results	According to DLC Test Results	According to DLC Test Results	According to DLC Test Results

APPLICATION:

- General illumination for narrow area layouts
- Hallways/corridors, office buildings, schools, hospitals, public walkway areas, parking lots and industrial.

- Retail aisles or long narrow store format
- Library stacks and storage areas
- Design for general or task lighting
- Economical alternative to meet design and budget requirements



* For list of qualified DLC fixture, please consult factory

PRODUCT FEATURES:

- Life tested to ensure light output up to 50,000 hours of operation to L70
- Tested to LM-79 and LM-80 standards
- Heavy-duty 20-gauge steel utilized throughout for durability and code compliance
- Pretreated with five-stage iron phosphate process to ensure superior paint adhesion
- Painted high-gloss baked white enamel
- Standard reflector comes in white highly reflective finish
- Frosted extruded lens delivers highly efficient volumetric light

- Shallow design is ideal for commercial and industrial spaces requiring general illumination
- Emergency battery back-up comes pre-installed on the fixture and emergency push button is installed on the fixture for easy access and aesthetics.
- Suitable for dry and damp environments
- Suitable for surface or suspended mounting
- Individual or continuous row mounting
- Lightweight design enables easier installation

LED
OC1

OPTICS - The frosted extruded acrylic lens of the OC1-LED gather the light scattered by the LED chips and delivers highly efficient volumetric lighting to any environment. LEDs are spaced on board ideally to completely hide any LED image when fixture is installed and powered on. The lens can be easily removed without the use of tools, making the unit upgradable and easily maintained.

OPTIONS - Fixtures can be shipped pre-installed with daylight harvesting controls, occupancy sensors, and/or power pack. Available manufacturer options include Leviton, Hubble Automation, and others. The Wattstopper - **MS-FM105** Super High Frequency Occupancy Sensor is a line voltage sensor that turns lighting on and off based on occupancy, and can hold lights off when sufficient daylight is available. It detects motion via super high frequency (SHF) electromagnetic waves and the Doppler principle. MS-FM105 is installed behind fixture lenses and hidden from view.

DIMMING - The ASI5-LED comes standard with **DIM10**, 0-10V dimming on either 120 or 277V. Dimmable down to 1% of initial lumens. Also available in Lutron dimming options. Consult factory for dimmer compatibility. **LUTH** - Lutron Hilume Dimming down to 1% compatible with 3 wire and EcoSystem Controls available on all fixtures up to 50 Watts. **LUT2W** - Lutron 2 Wire Dimming down to 1% compatible with 2 wire and Forward Phase Control Systems available on all fixtures up to 50 Watts. **LUTFTB** - Lutron Hilume Fade to Black Dimming down to 1% compatible with EcoSystem Controls available on all fixtures up to 75 Watts. **DIMST** - Step Dimming allows fixtures to be turned on at 100% or 50% is available for fixtures up to 50 Watts. **ELDO10.1** - EldoLED SoloDrive 0-10V. Dimming down to .1%. available on all fixtures up to 100 Watts. **ELDODALI** - EldoLED PowerDrive 0-10V. Dimming down to .1%. available on all fixtures up to 100 Watts. **ELDODMX** - EldoLED PowerDrive Dimming down to .1%. available on all fixtures up to 100 Watts. Please see EldoLED website for wiring diagrams and a list of compatible DMX and Dali control systems.

ELECTRICAL - Powered by high-quality constant-current power LED drivers which are rated for 50 to 60Hz at 120-277V input, produce less than 20% THD, and have a power factor of .90 to 1.00.

QUALITY CONTROL - Every fixture is turned on and rigorously tested by our QC Department before shipping.

WARRANTY - Limited 5 Year Warranty



LED General Linear Luminaire

Ordering Information: Example: 4-OC1-LED-4000L-DIM10-MVOLT-30K

FIXTURE SIZE	SERIES	TYPE	LUMENS	DIMMING	VOLTAGE	CCT	CRI	EMERGENCY	OTHER OPTIONS
4 - 4'	OC1-Oracle LED General Linear Luminaire	LED	3000L - (3000 lumens) 4000L - (3400 lumens) 5000L - (4650 lumens) 6000L - (5900 lumens) 7000L - (7150 lumens) 8000L - (8400 lumens) 10000L - (9500 lumens)	DIM10 - 0-10V Dimming * DIMST - Step Dimming * LUTH - Lutron Hilume * LUT2W - Lutron 2Wire LUTFTB - Lutron Fade to Black ELDO10.1 - EldoLED 0-10V ELDODALI - EldoLED DALI ELDODMX - EldoLED DMX	MVOLT 347* * Consult factory for details	30K - (3000K) 35K - (3500K) 40K - (4000K) 50K - (5000K)	85	0-EMG-LED	IMMS - Internal Motion Sensor OCGSS - Cable Gripper Suspension Kit OCVH - V Hook USA - Made in America Compliance WG - WireGuard
WIRING OPTIONS									
FBF - Internal Fast Blow Fuse SBF - Internal Slow Blow Fuse RIS - Radio Interference Sensor									

* DIMST, LUTH and LUT2W dimming options are only available for the fixtures up to 5000 lumens.

CONTROL OPTIONS



Controls Installed on the Fixture



LMFC-011

Fixture Will be Shipped Legrand Wattstopper DLM Enabled with LMFC-011 Module Controller Installed on the Fixture. Fixtures will be compatible with Legrand Wattstopper DLM Load Controllers, DLM Sensors, DLM Switches, DLM Remote Control, and DLM Configuration tool.

Switches



LMSW-105 LMDM-101

Remote



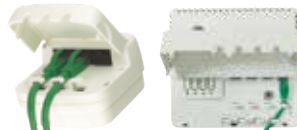
LMRH-105

Configuration tool



LMCT-100-2

Plug Load Controllers

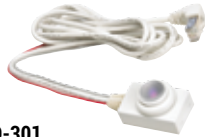


LMPL-101 LMPL-201

Sensors



LMDC-100 LMLS-400 LMLS-500



FD-301

Fixture Will be Shipped with Legrand Wattstopper FD-301 (Integrated Daylight Dimming Photosensor) installed and FS-PP-V2 Fixture Power Pack.



FS-PP-V2



FSP-202

Fixture Will be Shipped with Legrand Wattstopper FSP-202 (multi-level control based on motion and/or daylight contribution) installed.



FSP-212

Fixture Will be Shipped with Legrand Wattstopper FSP-212 (multi-level control based on motion and/or daylight contribution) installed.

LED

Control Options



Philips EasySense sensors provide luminaire-level control with Occupancy sensing, Daylight harvesting, and Field task tuning.

Controls Installed on the Fixture



SRB

Fixture will be Shipped Sensor Ready with SRB Bridge . Fixture will be Compatible with EasySense Sensor SNS200-CMP which can be Added in the Field for Remote Mounting. Fixture May Only be Controlled with Philips Field App or Wireless Switches or any 0-10V. Wall Box Dimmer.



PHILIPS-XSR + SNS200-CMP

Fixture will be Shipped Sensor Ready with PHILIPS-XSR driver and EasySense SNS200-CMP Sensor which is Included to be Remote Mounted. Fixture May Only be Controlled with Philips Field App or Wireless Switches



SRB + SNS200-CMP

Fixture Will be Shipped Sensor Ready with PHILIPS SRB Bridge and EasySense SNS200-CMP Sensor which is Included to be Remote Mounted. Fixture May Only be Controlled with Philips Field App or Wireless Switches or any 0-10V. Wall Box Dimmer.

Controls Provided by Philips



ZBT-S1AWH ZBT-S2AWH

Illumra Wireless Switches



Philips Field App

CONTROL OPTIONS

EASYFIT by EnOcean

Controls Options to be Installed on the Fixture

Self-powered sensors and switches, combined with LED fixture controllers and a commissioning tool, permit easy configuration, intelligent local control, and seamless integration into building automation systems.

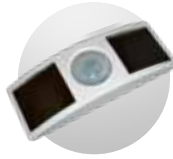


LEDRU
LED Relay Zone
Controller 0-10V



LEDDU
LED Zone
Controller 0-10V

Controls Provided by EnOcean



EOSCU
Occupancy Sensor
Ceiling Mount



EOSWU
Occupancy Sensor
Wall Mount



ELLSU
Daylight Sensor
Ceiling Mount



ESRPU/EDRP
Wall Switches



LEVITON
Wall Switches
902 MHz category



NWC 300U
Navigan Wireless
Commissioner

enlighted

Enlighted Smart Sensors features digital motion, ambient light, and temperature sensing, the device provides autonomous fixture-level control

Controls Installed on the Fixture



PHILIPS-XSR + FS-D22

Fixture Will be Shipped with Enlighted FS-D22 Two-wire sensor Sensor installed and PHILIPS-XSR driver. Fixture May be Controlled with Enlighted Gateway, Energy Manager or Enlighted Room Controller WS-2-00



CU-E3-1R + SU-4E-00

Fixture Will be Shipped with Enlighted SU-4E-00 Sensor installed and Enlighted CU-E3-1R Control Unit Power Pack. Fixture May be Controlled with Enlighted Gateway, Energy Manager or Enlighted Room Controller WS-2-00

CU-E3-1R



Fixture Will be Shipped Sensor Ready with Enlighted CU-E3-1R Control Unit Power Pack. Fixture will be compatible with Enlighted SU-4E-00 Sensor which can be Added in the Field Remote Mounting. Fixture May be Controlled with Enlighted Gateway, Energy Manager or Enlighted Room Controller WS-2-00



PHILIPS-XSR

Fixture Will be Shipped Sensor Ready with PHILIPS-XSR driver. Fixtures will be compatible with Enlighted CS-D2 Two-wire sensor which can be Added in the Field for Remote Mounting. Fixture May be Controlled with Enlighted Gateway, Energy Manager or Enlighted Room Controller WS-2-00.

Controls Provided by Enlighted



Gateway



WS-2-00
Enlighted Room
Controller

Switch



Programmable with Laptop



PoE Network Switch



Energy Manager

LED

Control Options

CONTROL OPTIONS



Controls Installed on the Fixture



FCJS-010
Individual
Fixture Control

Fixture Will be Shipped LUTRON VIVE Enabled with LUTRON FCJS-010 0-10V Control Module Installed on the Fixture. Fixtures will be compatible with Lutron FC-SENSOR Occupancy/Daylight Sensor or FC-VSENSOR Vacancy/Daylight Sensor which can be Added in the Field for Remote Mounting. Fixture May be Controlled with any Vive control systems. Fixtures must be ordered with a 0-10V. Driver.



FCJS-ECO
Individual
Fixture Control

Fixture Will be Shipped LUTRON VIVE Enabled with LUTRON FCJS-ECO EcoSystem Control Module Control Module Installed on the Fixture. Fixtures will be compatible with Lutron FC-SENSOR Occupancy/Daylight Sensor or FC-VSENSOR Vacancy/Daylight Sensor which can be Added in the Field for Remote Mounting. Fixture May be Controlled with any Vive control systems. Fixtures must be ordered with a Lutron Driver.

Controls Provided by Lutron



Lutron
App



Vive Wireless Hub



DayLight
Sensor



Ceiling Mount
Occupancy Sensor



Ceiling Mount
Occupancy/Daylight
Sensor



Wall Mount
Occupancy Sensor



Wall Mount
Switch



Pico
Remote



Fixture will be shipped with Leviton ZL027-N0W power control module installed on the fixture. Fixtures will be compatible with Leviton ZL00J-D0W sensor control module which can be added in the field for remote mounting. Fixture must be controlled with Leviton Intellect Keypad Room Controller, or Leviton Neuron App.



ZL027-N0W
Power control module



ZL00J-D0W
Sensor control module

Leviton Keypad



ZLDNK-1W



ZLDNK-2W



ZLDNK-4W



ZLDNK-8W

Intellect™ Keypad Room
Controller (Required)

Leviton App



Neuron App

LED

Control Options

PHOTOMETRY DATA

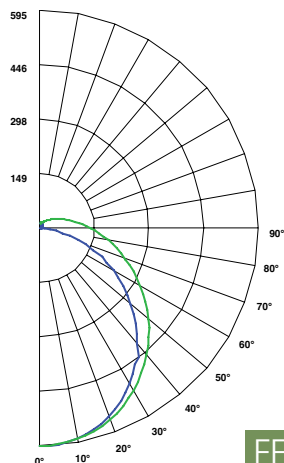
4-OC1-LED-2000L-DIM10-120-40K

WATTAGE: 24W

LUMENS: 2062

TOTAL LUMINAIRE EFFICACY: 87

Candle Power Distribution (Candelas)



Zonal Lumens Summary

Zone	Lumens	%Lamp	%Fixt
0-30°	459.74	N.A.	22.30
0-40°	751.21	N.A.	36.40
0-60°	1334.85	N.A.	64.70
0-90°	1851.16	N.A.	89.80
0-180°	2061.76	N.A.	100.00

Luminance Data (cd/sq.m)

Angle In Degrees	Average		
	0°	45°	90°
45°	4250	4557	4845
55°	3924	4494	4999
65°	3619	4602	5448
75°	2707	5343	6867
85°	1298	10683	15203

Candela Tabulation

	0	45	90
0	595.039	595.039	595.039
5	593.270	592.870	592.690
15	569.740	572.120	573.780
25	521.870	530.270	536.330
35	452.950	469.140	483.220
45	368.920	395.520	420.480
55	276.270	316.370	351.960
65	187.760	238.750	282.600
75	86.010	169.740	218.160
85	13.890	114.290	162.640
90	1.650	92.090	138.540

Spacing Criteria

0-180	: 1.24
90-270	: 1.28
Diagonal	: 1.38

EFFICACY: 87 LM/W

Coefficients of Utilization - Zonal Cavity Method

Effective Floor Cavity Reflectance 20% = PF

RC	RW	80%				70%				50%				30%				10%				0%			
		70%	50%	30%	10%	70%	50%	30%	10%	50%	30%	10%	50%	30%	10%	50%	30%	10%	50%	30%	10%	0%			
0	117	117	117	117	113	113	113	113	105	105	105	99	99	99	99	93	93	93	93	90	90	90	90		
1	105	99	94	90	101	96	91	87	90	86	83	84	81	78	79	76	74	71	71	71	71	71	71		
2	95	86	78	72	91	83	76	70	77	72	67	73	68	64	68	64	61	58	58	58	58	58	58		
3	86	75	66	59	82	72	64	58	68	61	56	64	58	53	60	55	51	49	49	49	49	49	49		
4	78	66	57	50	75	64	55	49	60	53	47	57	50	45	53	48	44	41	41	41	41	41	41		
5	72	59	50	43	69	57	48	42	54	46	41	51	44	39	48	42	38	35	35	35	35	35	35		
6	66	53	44	37	64	51	43	37	48	41	35	46	39	34	43	38	33	31	31	31	31	31	31		
7	62	48	39	33	59	47	38	32	44	37	31	42	35	30	40	34	29	27	27	27	27	27	27		
8	57	44	35	29	55	42	34	29	40	33	28	38	32	27	36	31	26	24	24	24	24	24	24		
9	53	40	32	26	52	39	31	26	37	30	25	35	29	24	34	28	24	22	22	22	22	22	22		
10	50	37	29	24	48	36	28	23	34	27	23	33	26	22	31	26	22	22	22	22	22	22	22		

RC - Ceiling Cavity Reflectance RW - Wall Reflectance

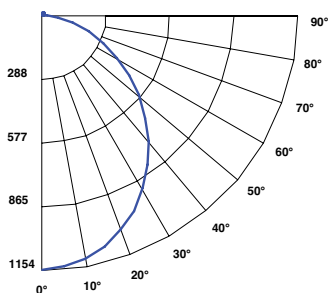
4-OC1-LED-4000L-DIM10-MVOLT-35K

WATTAGE: 36.9

LUMENS: 4113

TOTAL LUMINAIRE EFFICACY: 111

Candle Power Distribution (Candelas)



Zonal Lumens Summary

Zone	Lumens	%Lamp	%Fixt
0-30°	892.56	N.A.	21.70
0-40°	1461.35	N.A.	35.50
0-60°	2618.86	N.A.	63.70
0-90°	3687.96	N.A.	89.70
0-180°	4112.87	N.A.	100.00

Luminance Data (cd/sq.m)

Angle In Degrees	Average		
	0°	45°	90°
45°	795	912	1042
55°	710	909	1100
65°	616	934	1219
75°	463	1114	1552
85°	197	2276	3460

Candela Tabulation

	0	45	90
0	1153.911	1153.911	1153.911
5	1143.630	1144.854	1148.787
15	1085.265	1096.686	1115.235
25	976.914	1009.494	1052.397
35	828.603	891.900	967.617
45	656.946	753.390	860.940
55	475.947	609.444	736.947
65	304.029	461.376	602.154
75	140.004	336.771	469.494
85	20.097	231.795	352.350
90	2.700	189.441	299.376

Coefficients of Utilization - Zonal Cavity Method

Effective Floor Cavity Reflectance 20% = PF

RC	RW	80%				70%				50%				30%				10%				0%			
		70%	50%	30%	10%	70%	50%	30%	10%	50%	30%	10%	50%	30%	10%	50%	30%	10%	50%	30%	10%	0%			
0	117	117	117	117	113	113	113	113	105	105	105	99	99	99	93	93	93	93	90	90	90	90	90		
1	104	99	94	89	100	95	91	87	89	85	82	83	80	78	78	76	74	71	71	71	71	71	71		
2	94	85	78	71	90	82	75	70	77	71	66	72	67	63	68	64	60	58	58	58	58	58	58		
3	86	74	65	59	82	72	64	57	67	61	55	63	57	53	59	55	51	48	48	48	48	48	48		
4	78	65	56	49	75	63	55	48	60	52	46	56	50	45	53	47	43	40	40	40	40	40	40		
5	72	58	49	42	69	57	48	41	53	46	40	50	44	39	47	42	37	35	35	35	35	35	35		
6	66	52	43	37	63	51	42	36	48	40	35	45	39	34	43	37	33	30	30	30	30	30	30		
7	61	47	38	32	59	46	38	32	44	36	31	41	35	30	39	33	29	27	27	27	27	27	27		
8	57	43	34	29	55	42	34	28	40	33	27	38	31	27	36	30	26	24	24	24	24	24	24		
9	53	40	31	26	51	39	31	25	37	30	25	35	28	24	33	27	23	21	21	21	21	21	21		
10	50	36	28	23	48	36	28	23	34	27	22	32	26	22	31	25	21	19	19	19	19	19	19		

RC - Ceiling Cavity Reflectance RW - Wall Reflectance

EFFICACY: 111 LM/W

LED OC1

LED General Linear Luminaire